



**NAMIBIA UNIVERSITY
OF SCIENCE AND TECHNOLOGY**

FACULTY OF COMPUTING AND INFORMATICS

DEPARTMENT OF INFORMATICS

QUALIFICATIONS: Bachelor of Information Technology (Business Computing); Bachelor of Informatics	
QUALIFICATION CODE: OBSSBC/07BAIF	LEVEL: 7
COURSE CODE: ERP720S	COURSE: Enterprise Resource Planning Systems
DATE: June 2023	SESSION: 1
DURATION: 2 Hours	MARKS: 70

FIRST OPPORTUNITY EXAMINATION QUESTION PAPER	
EXAMINERS:	Mr Johnson Billawer
MODERATOR(S):	Dr Victoria Hasheela-Mufeti

**THIS EXAMINATION PAPER CONSISTS OF 6 PAGES
(INCLUDING THIS FRONT PAGE)**

INSTRUCTIONS FOR THE CANDIDATE

1. Answer ALL QUESTIONS.
2. When writing, take into account: The style should inform than impress, it should be formal, in third person, paragraphs set out according to ideas or issues, and the paragraphs flowing in a logical order.
3. Information should be brief and accurate.
4. Please ensure that your writing is legible, neat and presentable





SECTION A: Multiple Choice Questions. Marks for each question are shown at the end.

[Total Marks 20]

1. Which SAP ERP system did you use for practical in this course? **[1 Mark]**

- A. SAP R/3
- B. SAP HANA
- C. SAP R/1
- D. S/4HANA

2. Which of the following icons is used for performing enterprise-wide search and navigating to apps on the SAP S/4HANA Fiori Launchpad? **[1 Mark]**

- A. 
- B. 
- C. 
- D. 

3. The following are examples of business processes, except for _____. **[1 Mark]**

- A. Drawing up and sending your departmental budget
- B. Baking a cake at home
- C. Graduating students
- D. Recruiting employees

4. You are describing Organizational Data. Which two (2) statements are the most correct?

[2 Marks]

- A. The Organizational structure is modelled by assigning units to the structure
- B. Financial statements are created at plant level
- C. The company code is the highest organizational element
- D. A client or tenant is a self-contained unit

5. ERP implementation services costs include.... The are two (2) correct answers. **[2 Marks]**

- A. ERP licenses

- B. Training
- C. Change Management
- D. Networking

6. A purchasing info record is derived from which of the following master records? There are two (2) correct answers. **[2 Marks]**

- A. Conditions
- B. Output
- C. Vendor
- D. Material

7. In SAP S/4HANA, the Sales Area comprises of_____. There are three (3) correct answers. **[3 Marks]**

- A. Plant
- B. Sales organisation
- C. Controlling area
- D. Distribution channel
- E. Division

8. Material master data views needed for purchasing. There are Three (3) correct answers. **[3 Marks]**

- A. Purchasing
- B. Basic data
- C. Purchase order
- D. Header
- E. Sales order
- F. Accounting

9. For a sales order process as implemented in SAP S/4HANA, when a billing document is created, what integration points occur? There are three (3) correct answers. **[3 Marks]**

- A. The customer's credit account is updated
- B. On-hand inventory is decreased
- C. Actual demand is reduced

- D. An open item is posted on the customer's account
- E. Revenue is increased

10. When a goods receipt is created for materials received from the Vendor. Which two (2) G/L account(s) will be debited and credited? **[2 marks]**

- A. Decrease Inventory (credit inventory)
- B. Goods receipt of material from a vendor
- C. Decrease Inventory (credit inventory)
- D. Increase GR/IR liability (credit GR/IR)

SECTION B: Structured Questions. Marks for each question are shown at the end.

[Total Marks 50]

QUESTION 1

[19 Marks]

Assume you are hired by Zambikes company to manage the procurement process. You will perform different roles within the company such as purchasing agent, warehouse employee, and an accounting specialist.

- a) Illustrate the standard view of steps involved in the procure to pay process using the SAP S/4HANA ERP system. **[4 Marks]**

- b) Identify the organizational structure/units required to support the procure to pay process. **[3 Marks]**

- c) You received a request from the production unit to purchase 10 Brake kit.
 - i) Which document will you create in an ERP system to request for the 10 Brake kit from suppliers? **[2 Marks]**

 - ii) Once goods have been received and captured in an ERP system. Explain the effects of this transaction. **[5 Marks]**

- d) As a Purchasing Agent for Zambikes company:
 - i) What risks in the procurement process will you consider when receiving goods? **[3 Marks]**

 - ii) How will you eliminate the risks you stated in question d (i)? **[2 Marks]**

QUESTION 2

[6 Marks]

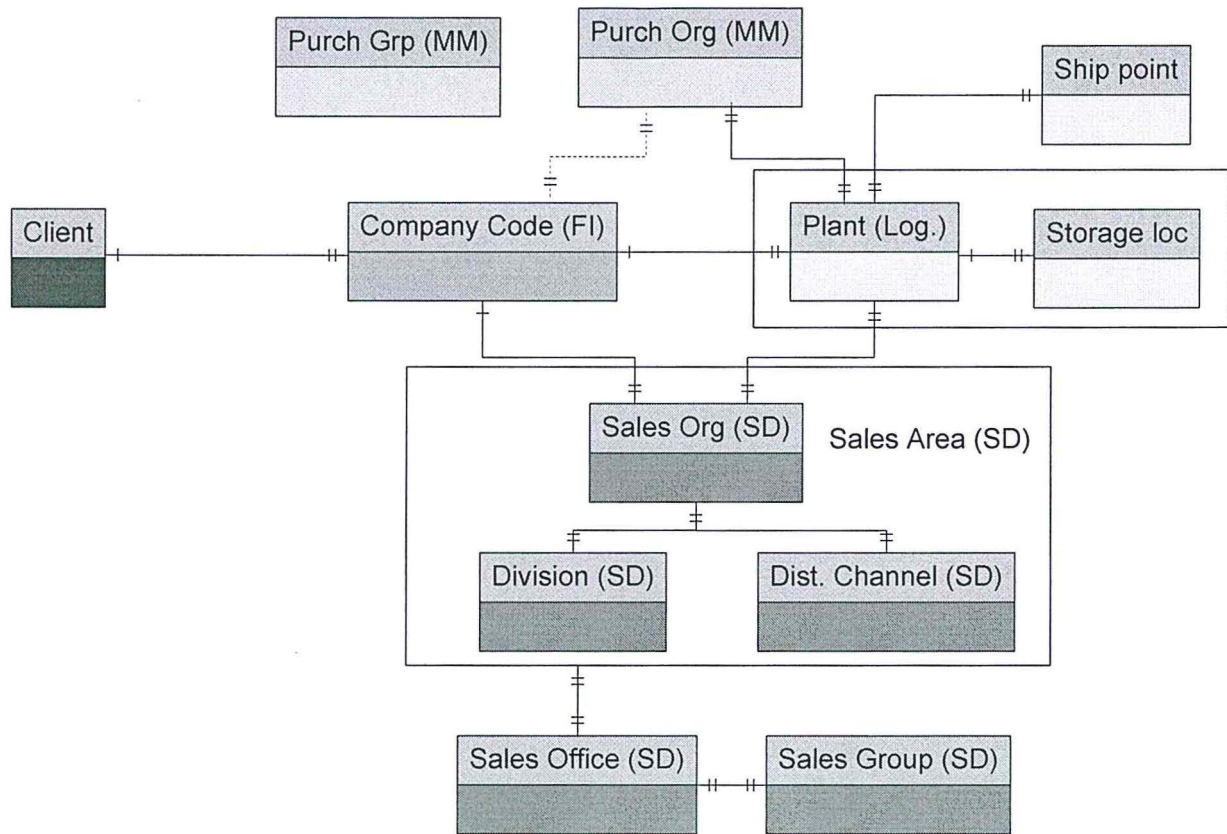


Figure 1: SAP organizational data elements

Analyze Figure 1 and answer the questions that follows:

- A) Explain the relationship between Client and Company Code. **[2 Marks]**
- B) Which two organizational data/units are only relevant in the procurement process? **[2 Marks]**
- C) During which application management phase is Figure 1 prepared and used? **[1 Mark]**
- D) What does these organizational levels in a SAP represent? **[1 Mark]**

QUESTION 3

[25 Marks]

- a) Use the scenario below to answer the questions that follow:

Assume a customer placed an order for products at your company. However, your company does not have the products and it would take three (3) calendar days to have the products (material

availability) in stocks from the day of order placement. You are further informed that the order is due in 6 days and the customer required delivery date is on the 6th day (Day 1, Day 2.....Day 6). Since all the machines are available you would like to start the production of these products immediately on Day 1.

- i) On which day will the production of the new products be completed? [1 Mark]
 - ii) On which day will you dispatch the products to the customer? [1 Mark]
 - iii) Which sales order scheduling approach is followed in the scenario? [2 Marks]
 - iv) Justify your choice of approach in iii). [2 Marks]
- b) The shipping process begins when you create the delivery document for the sales order. Discuss the three (3) sub-process for shipping process. [6 Marks]
- c) *Assume you own a grocery retail and hired four employees to assist you in managing the daily activities. The business has two warehouses for storing all the products received from suppliers.*
- i) Why will it be important for you to manage inventory in the shop? [5 Marks]
 - ii) On a particular day the following transactions occurred in your business. Analyse each statement below and state what type of goods movement is involved.
 - a) You purchased 20 products from your supplier and re-sell 15 of the products to a customer. [4 Marks]
 - b) You detected that two products are damaged hence will not be usable in the business. [2 Marks]
 - c) You transferred some products from one warehouse to the other. [2 Marks]

THE END OF EXAM